

FORD

FORD

**REPLACEMENT
PARTS**

All parts are aftermarket replacement parts and are not manufactured by the O.E.M. The original equipment part numbers are for reference only. Prices subject to change without notice. Not responsible for misprints.

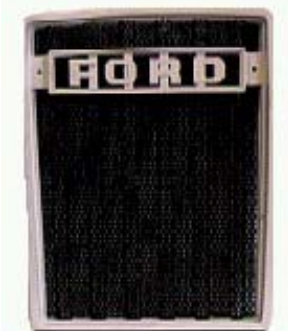
FORD

FRONT GRILLE SCREEN



PART NO.
D5NN8200A

FITS:
231, 233, 333, 335,
515, 531, 532, 2600,
3600, 3900, 4100,
4600, 5600, 6600,
7600



DESCRIPTION: One piece plastic frame with black metal screen. Replaces: C7NN8N202AC, C7NN8N202U, DONN8N202M, D2NN8N202H, D4NN8200C

UPPER GRILLE INSERT



PART NO.
C9NN8A163AG

FITS:
2000 series, 3000 series, 4000, 4100, 4200, 4400, 4410, 4500, 5000, 5100, 5200, 7000, 7100, 7200



DESCRIPTION: One piece plastic frame with painted letters.

LOWER GRILLE INSERT



PART NO.
D1NN8151A

FITS:
2000 series, 3000 series, 4000, 4100, 4200, 4400, 4410, 4500, 5000, 5100, 5200, 7000, 7100, 7200



DESCRIPTION: One piece plastic frame.

FRONT GRILLE, FORD



PART NO.
EONN8200AA

FITS:
2310, 2610, 2810, 2910, 3610, 3910, 4110, 4610, 7810



DESCRIPTION: metal grille, white

1953-64

SIDE PANEL—FRONT -LH



PART NO.
C3NN16653B

FITS:
NAA "JUBILEE", 500 SERIES, 600 SERIES, 700 SERIES, 800 SERIES, 900 SERIES; 2000 & 4000 ('62-'64)



DESCRIPTION:
LH Side front hood side panel. Metal. Painted black. Customer must paint to match tractor.

1953-64

SIDE PANEL—FRONT -RH



PART NO.
C3NN16652B

FITS:
NAA "JUBILEE", 500 SERIES, 600 SERIES, 700 SERIES, 800 SERIES, 900 SERIES, 2000 & 4000 ('62-'64)



DESCRIPTION:
RH Side front hood side panel. Metal. Painted black. Customer must paint to match tractor.

All parts are aftermarket replacement parts and are not manufactured by the O.E.M. The original equipment part numbers are for reference only. Prices subject to change without notice. Not responsible for misprints.

FORD

1953-62
HOOD NOSE PIECE



PART NO.
311319

FITS:
NAA "JUBILEE", 500
SERIES, 600 SERIES,
700 SERIES, 800
SERIES, 900 SERIES



DESCRIPTION: Metal. Painted gray.
Holds hood medallion.

1953-62
HOOD NOSE PIECE



PART NO.
311319AA

FITS:
NAA "JUBILEE", 500
SERIES, 600 SERIES,
700 SERIES, 800
SERIES, 900 SERIES



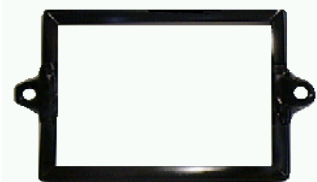
DESCRIPTION: Metal. Painted gray.
Holds hood medallion.

BATTERY HOLD DOWN



PART NO.
NCA10718A

FITS:
For 8N 10732 &
CONN10732T Battery
Boxes.



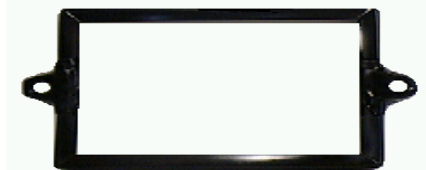
DESCRIPTION: Metal. Painted black. For battery 8-
15/16" Long X 6-13/16" wide.

BATTERY HOLD DOWN



PART NO.
311099

FITS:
For 4 CYL. Models 501,
601, 701, 801, 901 1958
& up w/12 Volt system



DESCRIPTION:
Painted Black. For Battery 16 1/4" long x 7-5/8" wide

BATTERY TRAY
(Support Assy.)



PART NO.
8N10732

FITS:
2N 1942-47, 8N 1948-
52, 9N 1939-41



DESCRIPTION: Metal battery tray. Painted primer.

BATTERY TRAY
(Support Assy.)



PART NO.
CONN10732T

FITS:
NAA "JUBILEE", 500
SERIES, 600 SERIES,
700 SERIES, 800
SERIES, 900 SERIES;
2000 & 4000 (1962-64)



DESCRIPTION: Metal battery tray. Painted primer.

All parts are aftermarket replacement parts and are not manufactured by the O.E.M. The original equipment part numbers are for reference only. Prices subject to change without notice. Not responsible for misprints.

FORD

FENDER SKIN



PART NO.
E1NN16315DA

FITS:
501, 601, 701 Except HiClear, 801, 901 Except HiClear, 2000, 4000 (1958-64); 2000, 3000, 4100, 4110, 4200, (1965-75); 2600, 3600, 4100, 4600 SU, 231, 335, 420, 515, 531, 532, 535, (1975-81); 2310, 2610, 2810, 2910, 3610, 3910, 4110, 4610, 230A, 530A, (1981-90).



DESCRIPTION: Metal fender skin. Fits LH or RH side. Less bracket. Uses bracket UB16388EB.

FENDER SKIN



PART NO.
CONN16312A

FITS:
8N, 9N, 2N



DESCRIPTION: Fender skin. Less bracket. Painted primer.

FENDER BRACKET



PART NO.
UB16388EB

FITS:
Used on Fender E1NN16315DA.



DESCRIPTION: Metal bracket for LH or RH side. Gray.

FENDER WITH BRACKET



PART NO.
D5NN16312

FITS:
501, 601, 701 Except HiClear, 801, 901 Except HiClear, 2000, 4000 (1958-64); 2000, 3000, 4100, 4110, 4200, (1965-75); 2600, 3600, 4100, 4600 SU, 231, 335, 420, 515, 531, 532, 535, (1975-81); 2310, 2610, 2810, 2910, 3610, 3910, 4110, 4610, 230A, 530A, (1981-90).



DESCRIPTION: Metal fender skin. Fits LH or RH side.

WATER PUMP



PART NO.
EAPN8A513F

FITS:
2000-7000 Except 6000, 2600-7600, 1975-11/86.



DESCRIPTION: Water pump. Single pulley and gasket included.

FAN ASSEMBLY -3 Blade



PART NO.
NCA8600A

FITS:
600, 700, 800, 900, 601, 701, 801, 901, 2000, 4000 with Gasoline Eng. 1955-64.



DESCRIPTION: 3 Blade fan assy. Made to specifications of original.

All parts are aftermarket replacement parts and are not manufactured by the O.E.M. The original equipment part numbers are for reference only. Prices subject to change without notice. Not responsible for misprints.

FORD

RADIATOR

PART NO.
E0NN8005MD15M

FITS:
2000, 2100, 2120, 2300,
2600, 2610, 3000, 3100,
3400, 3550, 3600, 3610,
3900, 3910, 4000, 4100,
4110, 4140, 4400, 4410,
4600, 4610, 5000, 5100,
5200.



DESCRIPTION:
Replaces: E0NN8005MC15M, E0NN8005MB15M

RADIATOR

PART NO.
C5NN8005V

FITS:
Ford 5000



DESCRIPTION:

WATER TEMP. GAUGE

PART NO.
C3NN18287A
(UTG25)

FITS:
All models 1953-64
except Majors.



DESCRIPTION:
(UTG25) Universal Temperature gauge with 57" line.

FORD

BREATHER CAP

PART NO.

C5NN9A660B

FITS:

For 2" air intake pipe. For dry type air cleaners on gas tractors:2000, 3000, 4000, (1965 -75); 2600, 3600, 4600, 231, 335, 515, 531, 532,(1975-81); for oil bath air cleaners on diesel tractors:2000, 3000 except 3500 and 3550, 4000 except 4500, (1965-75); 2600,3600, 231, 233, 333, (1975-81)

DESCRIPTION:



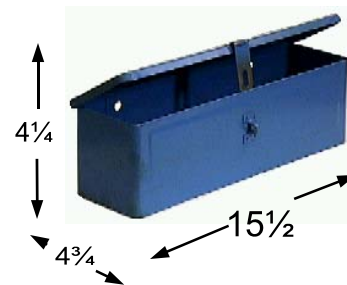
**TOOL BOX—BLUE
FENDER MOUNTED**

PART NO.

TOOLBOX-BLUE

FITS:

MOST FENDERS



DESCRIPTION: Metal. Painted blue.

FUEL SHUT OFF

PART NO.

E2NN9N024AA

FITS:

2000, 3000, 4000, 5000, 6000, 7000 SERIES. MOST ALL MODELS INCLUDING INDUSTRIALS.

DESCRIPTION:

FUEL SHUT OFF, VALVE ASSEMBLY.



**8N LOWER LIFT ARM –LH or
RH**

PART NO.

9N555B

FITS:

8N 1939-52

DESCRIPTION:32" center hole to center hole. 1/2" thick bar. Painted Ford red.



**BOSCH Power Steering
Pump**

PART NO.

E6NN3K514EA

FITS:

2000,2600, 2610, 3000, 3500-3550 from 7/50, 3600, 3610, 5100-7100 from 7/70, 4100 from 4/70, 4600, 5600, 660, 7600 1975-81



HYDRAULIC PUMP

PART NO.

DONN600F

FITS:

3550, 4000 (1965 to Present)

DESCRIPTION:

Sauer Sunstrand hydraulic pump

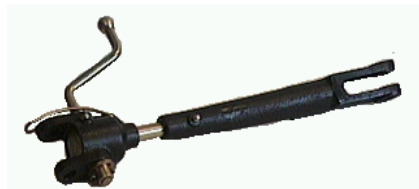


All parts are aftermarket replacement parts and are not manufactured by the O.E.M. The original equipment part numbers are for reference only. Prices subject to change without notice. Not responsible for misprints.

FORD

Cat. 1 ,LEVELLING BOX ASSY-
RH

PART NO.
C5NN569AN



FITS:
2000, 3000,
2610, 3610

DESCRIPTION:
14-1/2" fork with 3/4" dia. Shaft.

Cat. II, LEVELING BOX ASSY. -
RH

PART NO.
5000LEVBOX



FITS:
5000, 5100, 5200,
5340, 5600, 5700,
6600, 6700, 7000,
7100, 7200, 7600,
7700

DESCRIPTION: Assembly replaces part numbers
D2NNN983A, A935C. Leveling crank and yoke.

Cat. 1, YOKE SHAFT/FORK
ASSEMBLY

PART NO.
3000 YOKE
ASSY



FITS:
2000, 2600,
2610, 3000,
3600, 3610

DESCRIPTION:
COMPLETE ASSEMBLY FOR LEFT SIDE

CAT. II, YOKE SHAFT FORK - LH
ASSY.

PART NO.
5000YOKE



FITS:
FORD 5000

DESCRIPTION:
YOKE AND FORK ASSY. LEFT SIDE LEVELLING BOX.

Cat. 1, LEVELING BOX ASSY.
RH w/CRANK & KNUCKLE &
Bottom FORK

PART NO.
NCA577A-F



FITS:
8N, 9N, 2N
With 10-1/2"
fork

DESCRIPTION:
RH levelling box assembly. Crank and knuckle
included.
3/4" shaft. Also replaces TISCO # HLBMF61

Cat. 1, FORK, RH for 8N, 9N,
2N

PART NO.
ECON585A



FITS:
8N, 9N, 2N, NAA
1939-1954

Also replaces 9N858A

DESCRIPTION: Fork only for RH side levelling box
assembly with 3/4" threaded shaft.

All parts are aftermarket replacement parts and are not manufactured by the O.E.M. The original equipment part numbers are for reference only. Prices subject to change without notice. Not responsible for misprints.

FORD

REAR WHEEL RIM -9X28

PART NO.
9X28 RIM

FITS:
8N, 9N



HUB CAP -Spin On

PART NO.
957E1139

FITS:
Many Ford Tractors.
2000, 3000, 4000,
5000 series. NAA, 600,
700, 800, 900 Series.



2" dia.

DESCRIPTION:
SPIN ON HUB CAP WITH HOLE FOR GREASE FITTING.
Also replaces # 2N1139B & C5NN1N130A

FORD, 8N FRONT HUB

PART NO.
D5NN1104A
D5NN7104A
(OLD # NCA1104C)
FITS:
8N , 1948-1952



DESCRIPTION:
Front hub, 6 bolt. New Ford # 86511582

HUB, FRONT WHEEL

PART NO.
C9NN1104D

FITS:
5000, 5100, 5200, 5340,
5600, 5610, 5640, 5700,
5900, 6410, 6600, 6610,
6700, 6710, 6810, 7000,
7100, 7200, 7410, 7600, 7610, 7700, 7710, 7740,
7810, 7840, 7910, 8210



DESCRIPTION:
6 Bolt, Front Hub. Lug bolts and nuts not included.

HUB, FRONT

PART NO.
C9NN1104F

FITS:
2000 (1965-74), 2000
(1957 AFTER S/N 137818),
2100, 2110, 2120, 2150,
2300, 2310, 2600, 3000
SERIES, 3055, 3100, 3120,
3150, 3190, 3300, 3310,
3600, 3900, 4100, 4600SU. ALSO WITH PWR
STEERING; 2910, 3910, 4610, 4610SU, 4110N,
4110.



DESCRIPTION: ALSO REPLACES OLD# C5NN1104B
FRONT HUB, 6 BOLT. LUG BOLTS NOT INCL.

HUB, FRONT

PART NO.
C9NN1104E

FITS:
230A, 234, 334, 335,
530A, 600, 601, 661, 801,
851, 861, 2310, 2610,
2810, 2910, 3230, 3430,
3610, 3910, 4000, 4100,
4110, 4190, 4200, 4600, 4610, 4630, 4830, 5030



DESCRIPTION:
FRONT HUB, 6 BOLT. LUG BOLTS NOT INCL.

All parts are aftermarket replacement parts and are not manufactured by the O.E.M. The original equipment part numbers are for reference only. Prices subject to change without notice. Not responsible for misprints.

FORD

SPINDLE, LH for 8N

PART NO.
8N3106B

FITS:
8N (1948-52),
NAA (1953-54)



DESCRIPTION: Spindle, LH

SPINDLE, RH for 8N

PART NO.
8N3105B

FITS:
8N (1948-52),
NAA (1953-54)



DESCRIPTION: Spindle, RH

SPINDLE, LH-2000

PART NO.
C5NN3106R

FITS:
2000, 3000 SERIES
(Except 2110, 4110,
2300, 3300, 2100,
2120, 2310, 3100,
3120, 3310)



DESCRIPTION: Spindle, LH

SPINDLE, RH -2000

PART NO.
C5NN3105U

FITS:
2000, 3000 SERIES
(Except 2110, 4110,
2300, 3300, 2100,
2120, 2310, 3100,
3120, 3310)



DESCRIPTION: Spindle, RH

SPINDLE, RH -4000

PART NO.
C5NN3105T

FITS:
4000



DESCRIPTION: Spindle, RH

All parts are aftermarket replacement parts and are not manufactured by the O.E.M. The original equipment part numbers are for reference only. Prices subject to change without notice. Not responsible for misprints.

FORD

SPINDLE ARM, 8N FORD



PART NO.
8N3130A

FITS:
8N



DESCRIPTION: Left side or Right side spindle arm.

OIL FILTER CONVERSION
FLANGE w/SEAL



PART NO.
309825
D8NN6N818AA SEAL

FITS:
For gas & diesel Ford
tractor models: 2000,
3000, 4000, 5000
from 1965 to 10/1969



DESCRIPTION:
Converts 2 quart filter to 1 quart spin-on type.

MANIFOLD



PART NO.
B9NN9425A

FITS:
172 CID Gas
Engines in: NAA,
600, 700, 800,
900 Series.
2000 & 4000 w/
gas eng.



DESCRIPTION: Cast iron manifold

FORD

RADIATOR HOSE—LOWER



PART NO.
C5NN8286C



FITS:
4 CYL. GAS & 4500 1965
THRU 1975, 4 CYL.DSL. 4500
& 535 1965 & UP, 5600,
6600 & 7600 W /AIR 8/76 THRU 1981, 6500 1973
THRU 10/75

DESCRIPTION:
Hose; lower. Black rubber with reinforced fiber.

RADIATOR HOSE—LOWER



PART NO.
C5NN8286B



FITS:
3 CYL. GAS & DSL. 1965 &
UP, EXCEPT 4200 & 4500,
5610 & 6610 L/AIR 1981 & UP, 4600 W/AIR 1977 &
UP

DESCRIPTION:
Hose, lower. Black rubber with reinforced fibers

RADIATOR HOSE- UPPER



PART NO.
310048



FITS:
NAA "JUBILEE",
600 SERIES, 700
SERIES, 800
SERIES, 900
SERIES

DESCRIPTION:
Hose; upper. Black rubber with reinforced fibers

FORD PRICE LIST

FORD			
PART #	DESCRIPTION	PAGE #	
309825	CONVERSION FLANGE	FD-9	
310048	RADIATOR HOSE- UPPER	FD-10	
311099	BATTERY HOLD DOWN	FD-2	
311319	HOOD NOSE PIECE	FD-2	
3000 Yoke Assy	YOKE SHAFT/FORK ASSY	FD-6	
311319AA	HOOD NOSE PIECE	FD-2	
5000 Lev Box (R)	LEV BOX ARM ASSY.(R)	FD-6	
5000 Yoke Assy(L)	YOKE SHAFT/FORK ASSY.(L)	FD-6	
8N10732	8N BATTERY BOX	FD-2	
8N3105B	SPINDLE, RH	FD-8	
8N3106B	SPINDLE, LH	FD-8	
8N3130A	8N SPINDLE ARM	FD-9	
957E1139	HUB CAP- SPIN ON	FD-7	
9N555B	LOWER LIFT ARM	FD-5	
9X28 RIM	REAR WHEEL RIM -9X28	FD-7	
B9NN9425A	MANIFOLD	FD-9	
C3NN16652B	SIDE PANEL—RH	FD-1	
C3NN16653B	SIDE PANEL—LH	FD-1	
C3NN18287A	WATER TEMP GAUGE	FD-4	
C5NN3105T	SPINDLE, RH	FD-8	
C5NN3105U	SPINDLE, RH	FD-8	
C5NN3106R	SPINDLE, LH	FD-8	
C5NN569AN	3000 LEV BOX ASSY.®	FD-6	
C5NN8005V	5000 RADIATOR	FD-4	
C5NN8286B	HOSE, RADIATOR - LOWER	FD-10	
C5NN8286C	HOSE, RADIATOR - LOWER	FD-10	
C5NN9A660B	BREATHER CAP	FD-5	
C9NN1104D	FD5000 FRONT WHEEL HUB	FD-7	
C9NN1104E	FRONT HUB	FD-7	
C9NN1104F	FRONT HUB	FD-7	
C9NN8A163AG	FORD TOP GRILLE	FD-1	
CONN10732T	BATTERY BOX	FD-2	
CONN16312A	8N, 9N, 2N FENDER	FD-3	
D0NN600F	HYDRAULIC PUMP	FD-5	
D1NN8151A	FORD BOTTOM GRILLE	FD-1	
D5NN1104A	8N FRONT HUB	FD-7	
D5NN16312	FENDER W/BRK LH/RH	FD-3	
D5NN8200A	FORD GRILLE	FD-1	
E0NN8005MD15M	RADIATOR; 3610	FD-4	
E1NN16315DA	2000, 3000 FENDER	FD-3	
E2NN9N024AA	FUEL SHUT OFF	FD-5	
E6NN3K514EA	POWER STEERING PUMP	FD-5	
EAPN8A513F	WATER PUMP	FD-3	
ECON585A	10-1/2" FORK; 8N, 9N, 2N	FD-6	
EONN8200AA	FRONT GRILLE, FORD	FD-1	
NCA10718A	BATTERY BOX HOLD DOWN	FD-2	
NCA577A -F	8N, 9N, 2N; RH LEV. BOX	FD-6	
NCA8600A	3-BLADE FAN ASSY.	FD-3	
TOOL BOX	UNIV TOOL BOX (BLUE)	FD-5	
UB16388EB	FENDER BRACKET	FD-3	

All parts are aftermarket replacement parts and are not manufactured by the O.E.M. The original equipment part numbers are for reference only. Prices subject to change without notice. Not responsible for misprints.